

# CORD REELS & WORK LIGHTS



## WORKLIGHTS

- Weatherproof
- Tempered glass lens
- Chrome-plated, solid steel guard
- Shock-resistant double insulated wiring
- 500 watt colour-corrected quartz halogen bulb included
- 16-gauge heavy-duty chemical and abrasion resistant cord
- Powder-coated steel construction
- Rubber leg tips protect floors and surfaces
- 1 year limited warranty



### 1' TO 3' TELESCOPIC

- 8' cord
- Collapsible steel base
- Lights up to 6,000 sq. ft.

Model No. XA150

### 4' TO 8' TELESCOPIC

- Double-reinforced sandbaggage steel base expands to 48"
- 15' cord
- Lights up to 7,000 sq. ft.

Model No. XA140

### 4' TO 8' TELESCOPIC TWIN

- Twin head independently adjustable 360°
- Two 10-A switches
- Double-reinforced sandbaggage steel base expands to 48"
- 15' cord
- Lights up to 14,000 sq. ft.

Model No. XA141

### REPLACEMENT BULB ON ALL 3 STYLES

Model No. XB149



## PORTABLE HALOGEN WORK LIGHT

- Quartz halogen fixture
- 500 watt bulb included
- Colour: Black and yellow
- CSA approved

Model No. XA992

### REPLACEMENT BULB

Model No. XB149



## WORK REELS

### INCANDESCENT WORK LIGHT REEL

Incandescent work light is rated for a 75 W bulb. Includes switch and circuit breaker protected convenience outlet. Grounded metal guard with reflector protects the bulb.

### EXTENSION REEL

Triple outlet extension reel with reel circuit breaker.

### 13 W FLUORESCENT WORK LIGHT REEL

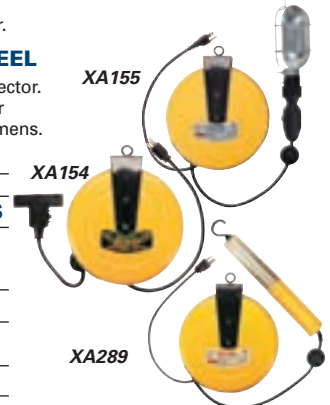
Includes switch, hanging hook, and full-length reflector. Rugged polycarbonate shield is easily removed for tool-free lamp replacement. Light output is 900 lumens.



XA155

XA154

XA289



Model No. Description

### INCANDESCENT WORK LIGHT REELS

XA640	20' 18/3 SVT cord, 7 A rating
XA155	30' 16/3 SJT cord, 10 A rating
XA921	50' 18/3 SVT cord, 7 A rating

### EXTENSION REELS

XA154	30' 16/3 SJT cord, 10 A rating
XB281	30' 14/3 SJT cord, 13 A rating

### FLUORESCENT WORK LIGHT REEL

XA289	40' 18/2 SJT cord
XA412	30' 16/3 SJT cord, 10 A outlet in light



## WEATHERPROOF QUARTZ HALOGEN FIXTURES

- Double fixture with adjustable tripod
- 500 W bulbs included
- Extended height: 7'
- CSA approved
- Colour: Yellow

Model No. XA007

### REPLACEMENT BULB

Model No. XB149



## FLUORESCENT WORK LIGHTS

- Cool running
- Shatter resistant polycarbonate tube
- Includes enclosed starter switch, rubber end caps, a full-length reflector, and hanging hook
- Moisture and dust resistant
- Light output is 900 lumens
- Colour: Yellow
- 25'. 18/2 SJTOW cord



Model No. XA146

13 W, 10" length

Model No. XA149,

15 W, 22" length



## INCANDESCENT HAND LAMPS

- 100-W explosion proof light provides 1600 lumens of light output
- CSA and UL approved for Class Division I Group C and D hazardous locations
- 16/3 SOOW cord with a non-explosion proof plug (explosion proof plug is also available)

Model No. XA269 25' cord

Model No. XA103 50' cord

### REPLACEMENT BULB

Model No. XB123



## FLUORESCENT WORK LIGHTS

- Cool running fluorescent bulb
- Shatter resistant polycarbonate lamp shield
- Includes: full length reflector, switch and hook
- Models XB906, XB907 and XB967 also have a magnet mount and outlet



Model No. Description Length"

### COMPACT TWIN-TUBE

XB906	13 W, 25' Cord, 16/3 SJT	13
XB907	13 W, 50' Cord, 16/3 SJT	13
XB967	26 W, 25' Cord, 16/3 SJT, Dual Twin-Tube	15

XA251 Replacement Bulb

### LINEAR FLUORESCENT

XB968	15 W, 25' cord, 18/2 SJT	26
XA572	Replacement Bulb	



## LED WORK LIGHT

- 60 LED lights
- Heavy-duty 15' AC cord
- Heavy-duty 110 V adaptor
- 100,000 hours bulb life
- Water and oil resistant
- Hanging hook
- Unique On/Off switch

Model No. XC355



## INCANDESCENT WORK LIGHTS

- Rated for a 100 W bulb
- Protected by heavy-gauge metal guard and reflector
- Includes circuit breaker protected convenience outlet, rated for a full 15 A capacity
- Colour: Yellow
- 14/3 SJTOW cord

Model No. XA175, 25'

Model No. XA918, 50'



## RECHARGEABLE AC/DC WORK LIGHT

- 60 LEDs up to 100,000-hour bulb life
- Durable ABS plastic
- Up to 8 hours on a full charge
- Impact, oil and water resistant
- Includes: Charger, car charger and powerful magnet

Model No. XC233



B184

22676E

# WORK LIGHTS & FLASHLIGHTS

## METAL HALIDE WORK LIGHTS

- Bright, durable and virtually indestructible
- Self-righting, highly durable work light
- Internal ventilation system keeps light cold enough to touch
- String them in a series or use individually
- No set up, just plug it in
- Unique counter weighted design repositions to upright when knocked over
- Floating shock system protects bulb from jarring and striking
- Tough polycarbonate dome protects bulb from contact with hard objects and debris
- 8000-hour bulb life



XC332



XC334

Model No.	Mfg. No.	Light Output Lumens	Amps	Applications
XC332	WL175MH	15,000	1.6	Residential Construction, Remodelling, Light Manufacturing, Medium Rooms, Medium Outdoor Areas
XC334	WL400MH	40,000	3.6	Commercial Construction, Heavy Industry, Farm & Agriculture, Fire & Rescue, Large Area, Large Outdoor Area

### ACCESSORIES

Model No.	Mfg. No.	Description
XC335	WL52230	180° Arc Reflector Shield

### REPLACEMENT BULBS

XB213	M175/U	Replacement Bulb for XC332
XB215	M400/U	Replacement Bulb for XC334



## SUPER SABRELITE® LASER SPOT™ 2000 SERIES

- Watertight to 500'
- Unbreakable ABS body, high impact polycarbonate lens
- Exclusive state-of-the-art Laser Spot™ xenon lamp module produces tightly focused collimated white light beam with 400% increased net candlepower
- Includes belt spring clip, stainless steel split ring and black lanyard
- Meets military specifications.
- Requires 3 C-cell alkaline batteries, not included
- Colours: Yellow or black. Length: 7 1/2"
- Diameter: 1 7/8"



XA129

Model No. XA129 Yellow

Model No. XA130 Black

Model No. XB874 C Batteries, 12/pkg.

Model No. XA012 Replacement bulb

## HEAVY-DUTY RUBBER FLASHLIGHT

- Durable rubber construction
- Ribbed body for sure grip
- Water and shock resistant
- Push-button switch for easy handling
- Uses 2 D-cell batteries, not included
- Colour: Black and yellow



Model No. SJ148

Model No. XA711 Replacement bulb

Model No. XB875 Batteries, D-cell, 12/pkg.

## LED ALUMINUM FLASHLIGHT SET

- Set includes:
  - 6-LED 12" flashlight, takes 3 D batteries
  - 3-LED 8 1/4" flashlight, takes 3 AAA batteries
- Anodized aluminum housing
- 100,000-hour bulb life
- Soft rubber grip handle
- Batteries not included

Model No. XC336



## MITYLITE™ 1900 SERIES

- Made of unbreakable space age hi-impact polycarbonate resin, 4 3/4" in length
- Laser Spot™ Xenon® lamp module provides 400% more light
- Equipped with a shirt clip, making it easy to fit into pockets, purses, tool kits, camera bags or glove compartments
- Safe to be used in gaseous or electrical hazardous environments
- Non-submersible • Colour: Yellow



### Approvals

UL Class I, Div 2: Group C,D, T3C  
 CSA Class I, Div 2: Group ABCD, T3C  
 Class II; Div 2; Group G  
 AUS Ex ia s IIB T4 IP67  
 Ex (CE) II 3 GD EEx nL IIC T4 135°C

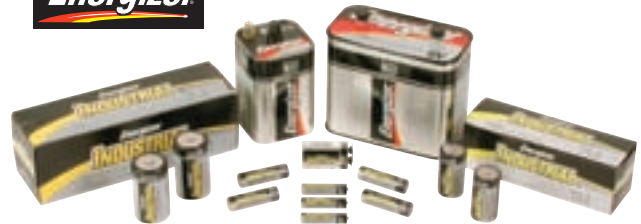


Model No. XA027

### REPLACEMENT BULB

Model No. XA018

## ENERGIZER® BATTERIES



Sold per package

Model No.	Mfg. No.	Description	Qty /Pkg
<b>ALKALINE INDUSTRIAL PACKAGING</b>			
XB873	EN92	AAA/1,5 V	24
XB872	EN91	AA/1,5 V	24
XB874	EN94	C/1,5 V	12
XB875	EN95	D/1,5 V	12
XB876	EN22	9 V	12
<b>ALKALINE</b>			
XB996	A76BP2	1,5 V, Instruments	2
XA430	529	Lantern, 6 V, Spring	1
XA432	521	Lantern, 6 V, Screw	1

# EXTENSION CORDS & LAMPS

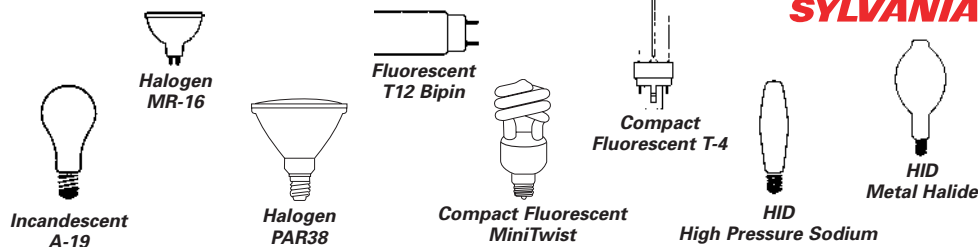
## THE PRO-TEC-TOR™ CIRCUIT BREAKER EXTENSION CORD

- The only extension cord with a circuit breaker that can be reset right at the outlet end
- Protects cord set from equipment overload, which can cause electrical fires
- Safety yellow SJTW cord



Model No.	Mfg. No.	Description	Wire Ga/Cond.	Voltage	Cord Length'	Rating Amps
<b>HEAVY-DUTY</b>						
XA084	LE14-25CB	Single Outlet	14/3	125	25	15
XA073	LE14-50CB	Single Outlet	14/3	125	50	15
XB983	LE14-T6	Triple Outlet	14/3	125	6	15
XA054	LE14-T25	Triple Outlet	14/3	125	25	15
XA059	LE14-T50	Triple Outlet	14/3	125	50	15
<b>CONTRACTOR-DUTY</b>						
XC057	LE12-T25	Triple Outlet	12/3	125	25	15
XA055	LE12-T50	Triple Outlet	12/3	125	50	15
XA056	LE12-T100	Triple Outlet	12/3	125	100	15

## LAMPS



Nominal Watts	Lamp	Base	Model No.	Mfg. No.	Volts	Qty/Case	Description	Avg. life	Lumen output	L.C.L."	M.O.L."
<b>INCANDESCENTS</b>											
<b>Sold per package of 2</b>											
40	A-19	Med.	XB114	40A/2P/24/6000	120-125	12	Inside frost, long life, 2/pkg.	6000 hrs	480	3 1/8	4 7/16
50	A-19	Med.	XB122	50A/RS/2P/RP/120V	120	24	Inside frost, rough service, 2/pkg.	1000 hrs	480	2	3 15/16
60	A-19	Med.	XB115	60A/2P/24/6000	120-125	12	Inside frost, long life, 2/pkg.	6000 hrs	650	3 1/8	4 7/16
100	A-19	Med.	XB117	100A/2P/24/6000	120-125	12	Inside frost, long life, 2/pkg.	6000 hrs	1270	3 1/8	4 7/16
100	A-19	Med.	XB123	100ARS2PRP	120	24	Inside frost, rough service, 2/pkg.	1000 hrs	1260	2 7/8	4 7/16
Nominal Watts	Lamp	Base	Model No.	Mfg. No.	Volts	Qty/Case	Description	Avg. life	Beam spread		
<b>HALOGEN</b>											
<b>Sold per each</b>											
20	MR-16	GU5.3	XC305	20MR16/FL35		12	Reflector, flood beam	4000 hrs	700		35°
50	MR-16	GU5.3	XB153	50MR16/FL40 (EXN)		12	Reflector, flood beam	4000 hrs	2000		40°
50	PAR20	Med.	XB143	50PAR20/CAP/NFL		130	Narrow flood	2500 hrs	1250		30°
50	PAR30	Med.	XB137	50PAR30LN/CAP/WFL		130	Wide flood	2500 hrs	500		50°
75	PAR30	Med.	XB140	75PAR30LN/CAP/WFL		130	Wide flood	2500 hrs	750		50°
45	PAR38	Med.	XB133	45PAR38/CAP/SPL/FL/30/130V		130	Flood	2500 hrs	1600		30°
90	PAR38	Med.	XB135	90PAR38/CAP/SPL/FL/30/130V		130	Flood	2500 hrs	3600		30°
120	PAR38	Med.	XB235	120PAR38/CAP/SPL/FL/30/130V		130	Flood	3000 hrs	5000		30°
Nominal Watts	Nominal length"	Base	Model No.	Mfg. No.	Qty/Case	Description	Avg. life	Initial lumen output			
<b>FLUORESCENTS - T12</b>											
<b>Sold per case</b>											
34	48	Med. Bipin	XB916	F34CW/SS/ECO (F40CW/SS/ECO)	30	Cool white <i>Supersaver</i> ®	20000+ hrs	2700			
60	96	Single Pin	XB068	F96T12/CW/SS	15	Cool white <i>Supersaver</i> ®	12000 hrs	5300			
Nominal Watts	Lamp	MOL"	Base	Model No.	Mfg. No.	Qty/Case	Description	Avg. life	Initial lumen output		
<b>COMPACT FLUORESCENTS</b>											
<b>Sold per each</b>											
13	MiniTwist	4.5	Med.	XB913	CF13EL/MINITWIST/BL/1	6	3000K, 82 CRI	8000 hrs	800		
9	T-4	6.5	G23	XB277	CF9DS827	50	2700K, 82 CRI	10000 hrs	580		
13	T-4	7.1	GX23	XB275	CF13DS/841/ECO	50	4100K, 82 CRI	10000 hrs	800		
Watts	Lamp	Base	Model No.	Mfg. No.	Qty/Case	Description	Avg. life (hrs)	Approx. lumens (initial)	(mean)	CRI	Colour temp
<b>HID - HIGH PRESSURE SODIUM</b>											
<b>Sold per each</b>											
50	E-17	Medium	XB205	LU50/MED	20	Clear	24000+	4000	3600	22	1900K
150	E-17	Medium	XB208	LU150/55V/MED	20	Clear, 55 volt	24000+	15800	13400	22	2100K
400	ET-18	Mogul	XB202	LU400/ECO	20	Clear	24000+	50000	45000	22	2100K
<b>HID - METAL HALIDE</b>											
<b>Sold per each</b>											
175	BT-28	Mogul	XB213	M175/U	6	Clear, univ. burn	10000V, 7500H	14400V, 12800H	12000V, 10300H	65	4200K
250	BT-28	Mogul	XB214	M250/U	6	Clear, univ. burn	10000V, 10000H	22000V, 20000H	17000V, 14100H	65	4200K
400	BT-37	Mogul	XB215	M400/U	6	Clear, univ. burn	20000V, 15000H	36000V, 32000H	25000V, 20500H	65	4000K
1000	BT-56	Mogul	XB217	M1000/U	6	Clear, univ. burn	15000V, 9000H	110000V, 107800H	88000V, 86300H	65	4000K

\*Other lamps available upon request

# WELDING BLOWERS & BRACKETS

## POWER CAT® PORTABLE BLOWER

- Provides the extra power to tackle tough, industrial jobs
- Unique portable blower can be used for ventilating, cooling and heating the work space
- Removes fumes and smoke created during welding through addition of accessories
- Choice of 300 CFM model blower, or variable 1120/877 CFM unit
- Fitted with a duplex receptacle featuring 25', heavy-duty grounded extension cord
- 120 Volt/60 Hz motor
- Accessories sold separately



### ACCESSORIES FOR MODEL EA090



Model No.	Mfg. No.	Blower	Lamp	Receptacle
EA090	A300	300 CFM	40 Watts	Duplex, Grounded
EA091	1200XL	High Speed – 1120 CFM Low Speed – 877 CFM	N/A	Duplex, Grounded Weather-Resistant

### ACCESSORIES

Model No.	Mfg. No.	Description
<b>FOR USE WITH EA090</b>		
EA092	300DA	Duct accessory. 10' x 5" flexible duct with exhaust adaptor.
EA093	300EXT	Extension accessory. 10' x 6" flexible duct with connecting sleeve and clamp. <b>Use to extend EA092 and EA094 in 10' increments.</b>
EA094	300IA	Intake accessory. 10' x 6" flexible duct with quick-mount fittings at both ends.
EA095	300FE	Welding Fume Exhaust Nozzle. Clamps to 300IA to direct intake of welding fumes.

### ACCESSORIES FOR MODEL EA091

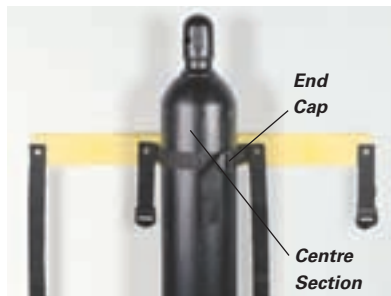


### FOR USE WITH EA091

EA096	1200EA	Extension accessory. Easily attaches to connect EA098 to unit.
EA097	1200IA	Intake Adaptor. Quick-mount fitting to attach duct to unit.
EA098	1200FD	Flexible Duct. 10' x 8" duct to be used with either EA096 or EA097.
EA099	1200DC	Duct Coupling. Clamp-on connector for additional EA098 ducts.
EA100	1200FE	Welding Fume Exhaust Nozzle. Clamps to EA098 for extraction of welding fumes.

## POLY-CYLINDER MODULAR BUMPER BRACKETS™

- Modular design
- Holds one, two or three cylinders
- Attaches to any wall securely and easily
- Yellow polyethylene
- Accommodates 3" to 10" cylinders
- Dimensions: 16" L x 4" W x 4" H
- Weight: 2 lbs.
- OSHA 29 CFR.1910 approved

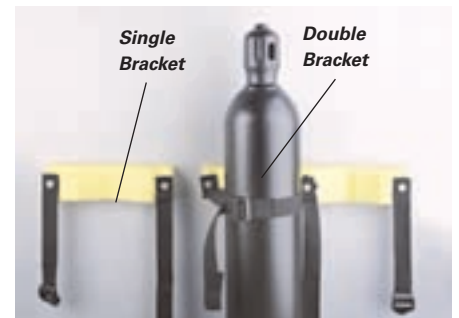


Model No.	Mfg. No.	Description
SE974	7215-YE	Centre Section
SE975	7214-YE	End Cap



## POLY-CYLINDER BUMPER BRACKETS™

- Choose from a single or double cylinder design
- Bumper brackets easily and securely attach to any wall
- Durable nylon straps hold cylinders secure
- Rounded edges prevent cylinder from marring
- Low density polyethylene is rust and corrosion resistant, also resists sparking
- Accommodates cylinder diameters 3" to 10"
- Colour: Yellow
- OSHA 29 CFR.1910 approved



## 2-CYLINDER POLY-STAND™

- Free-standing design maximizes floor space
- Made of polyethylene resisting sparring, rust and corrosion
- Prevents accidental tipping with durable nylon straps to keep cylinders and stand secure
- Ideal for inexpensive wall-mounted storage
- Accommodates two cylinders with diameters of 3" to 12 3/8"
- Dimensions: 28" x 14" x 30"
- Load bearing capacity of 400 lbs.
- Weight: 14 lbs.
- Colour: Yellow
- OSHA 29 CFR.1910 regulation



Model No. SE966  
Mfg. No. 7212-YE



21043E

Model No.	Mfg. No.	Description	Dimensions				Wt. lbs.
			L"	x W"	x H"	x H"	
SE972	7211-YE	Single	15	x 4	x 3	2	
SE973	7210-YE	Double	24	x 4	x 3	3	

## GAS CYLINDER CART

- Weight: 30 lbs.
- Base dimensions: 19" x 10"
- Wheels: 10" Dia. semi-pneumatic
- Capacity: 144 cu.ft. or 244 cu.ft. oxygen, 130 cu.ft. acetylene cylinders

Model No. MD213  
Mfg. No. 204/CC-4



B187

# OUTFITS & TORCH KITS

## EXCALIBUR WELDING AND CUTTING OUTFIT

- Designed for all trades
- Welds up to 1/4" and cuts up to 1"
- 20' twin hoses
- Harris® Steel Worker™ Classic compatible
- **Includes:** Torch handle (442T), cutting attachment (442C), regulators (452X-80/452Y-15), cutting tip (472C-1), mixer (472M), welding elbows (472W-3/-5/-7), twin hoses, goggles, striker, plastic case

Model No. 331-1885  
Mfg. No. 4120



## TOTE-A-TORCH WELDING AND CUTTING OUTFIT

- Light-to-medium duty portable outfit
- Weld up to 3/16" and cuts up to 1/2"
- Rear entry regulators for better balance
- Acetylene regulator has an "MC" (CGA 200) inlet connection; oxygen regulator has standard CGA 540 connection
- 12.5' twin hoses
- Victor® portable torch or Super Range® compatible
- **Includes:** Torch handle (142T), cutting attachment (142C), regulators (210X-80/210Y-15), cutting tip (172C-0), welding nozzle (172W-1), twin hoses, goggles, striker, plastic carrier, one "MC" acetylene cylinder, one "R" oxygen cylinder

Model No 331-1070  
Mfg. No. 12-PTC



## AIR-ACETYLENE FEATHER FLAME® TORCH KITS

- Screw-in style
- Feather brush flame
- Interchangeable screw-in tips
- Heavy-duty torch
- UL listed brass regulator
- **Includes:** 12' hose, handle, lighter and wrench

330-1663



Model No.	MFG. No.	Tip No.	Reg. FTG
330-1663	KA-1H	BA-3	"B" Cylinder
330-1669	KA-2H	BA-3	"MC" Cylinder

## LIGHT/MEDIUM DUTY WELDING & CUTTING OUTFIT

- Comes with check valves
- Welds up to 3/16", cuts up to 1/2"
- Victor® compatible

Model No 331-3025  
Mfg. No. 21B-1SPCV



## HOTSPOTTER ALL PURPOSE STANDARD DUTY PROPANE TORCH KIT

- All purpose propane flame tool operates off of the pressure of a standard propane tank-no regulator required
- Appropriate for a wide variety of all-season maintenance/repair applications at commercial offices, factories, institutions, warehouses, parks, residential properties, farms and parking lots
- Burns weeds, repair asphalt, seal tar, peel paint, remove road markings, melt ice, and thaw pipes
- Comes with durable 10' neoprene hose, accurate brass flow control shut-off valve and delivers 500,000 BTU
- Standard kit has a welded tube nozzle and comes with striker
- Meets NFPA 51 specifications

Model No. TTU073 Mfg. No. WB-102



## GAS CYLINDER CABINETS

- Heavy-duty construction
- 2" x 2" 10-gauge formed steel angle posts
- 9-gauge wire mesh doors and walls for venting
- 14-gauge checker plate shelves and roof
- English and French warning labels included
- Padlock hasp for added security
- Innovative door design allows for left or right opening installation
- Easy assemble, knock-down feature saves on shipping costs



SAF837



SAF847



### OXYGEN GAS (9" DIAMETER CYLINDERS)

Model No.	H"	x	W"	x	D"	Cylinder Capacity	Wt. lbs.
SAF837	74	x	44	x	30	10	210
SAF848*	74	x	88	x	30	20	420

\*Consists of two units of the SAF837

### LIQUID PROPANE (35 LB CYLINDERS)

Model No.	H"	x	W"	x	D"	Cylinder Capacity	Wt. lbs.
SAF836	37	x	44	x	30	6	135
SAF847	74	x	44	x	30	12	270

Notes: Constructed to meet or exceed strict CSA International B149.2-0 Propane Storage and Handling Code must be stored vertically at all times.

# WELDING TOOLS & ACCESSORIES

## CAM ACTION CABLE CONNECTORS

- Fits cable sizes 4 through 4/0
- Manufactured from heavy wall precision machined brass alloy
- Brass body assembly slides into heavy-duty neoprene insulator with no external screws
- Compatible with most common brands



Model No.	Description
NT664	Male/Female Connector Set
NT649	Male Half with Insulator
NT650	Female Half with Insulator



## INDUSTRIAL-DUTY SCRATCH BRUSHES

- Wood handle
- Choice of carbon or stainless steel bristles



Model No.	Bristles	Rows
<b>LONG HANDLE BRUSHES</b>		
WN994	Carbon Steel	3 x 19
NT608	Carbon Steel	4 x 19
NT611	Stainless Steel	3 x 19
NT612	Stainless Steel	4 x 19
<b>SHOE HANDLE BRUSHES</b>		
708-1030	Carbon Steel	3 x 16
708-1040	Carbon Steel	4 x 16
708-1070	Stainless Steel	3 x 16
708-1080	Stainless Steel	4 x 16
<b>"TOOTHBRUSH" CLEANING BRUSH</b>		
NT615	Stainless Steel	3 x 7

## HEAVY-DUTY "C-STYLE" GROUND CLAMP

- C-type jaws are adjusted by screw lever
- Rubber insulated cable connector
- 600 amps

Model No. NP527

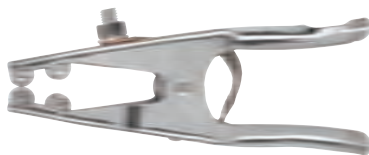


## GROUND CLAMPS

- Manufactured from nickel-plated steel with forged brass conductors
- Heavy-duty springs provide positive strength at jaws
- BZ947 ideal for farm and light shop work
- NT662 for portable gas driven welders, fully insulated hinge and spring prevents arcing



Model No.	Amps
BZ947	300
NT662	500



## HEAVY-DUTY GROUND CLAMPS

- Manufactured from heavy-duty nickel-plated steel
- Forged brass conductors and braided copper strap
- Heavy-duty spring provides positive contact at jaws
- Includes Allen wrench



Model No.	Amps
NT668	300
NT669	500



## SHORTSTUB™ ELECTRODE HOLDERS

- Manufactured from copper alloy for maximum conductivity and strength
- Fibreglass insulators are designed to withstand intense heat and impact



Model No.	Description	Amps
NT629	Shortstub™ w/Neck Ring	400
NT631	Shortstub™ w/Neck Ring	600
NT630	Slimline – Bernard® Style	400

# WELDING TOOLS & ACCESSORIES

## CHIPPING HAMMER

- Cone and chisel head
- Spring steel handle
- Overall length: 10 1/2"
- Head length: 6 1/4"

Model No. NP532



## MULTI-PURPOSE MIG PLIERS

- Eight-way pliers
- Nickel plated finish
- Ideally suited for removal of hot spatter from nozzle ends, as well as many other uses



Model No.	Description
NP537	Pliers
NP538	Holster for pliers

## FLINT LIGHTERS

- Choice of single or tri-flint lighters
- Additional flints sold separately

NT642



NT224



710-1025

710-1040



Model No.	Mfg. No.	Description
NT642	WM2001	Single Flint Lighter
710-1025	WM2001X	Flints, 5 per Holder
NT224	WM4501	Tri Flint Lighter
710-1040	WM5001X	Flints - each

## 24 OZ. FIBERGLASS LAVASHIELD™ WELDING BLANKETS

- 24 oz. black fiberglass with neoprene coated both sides
- Hemmed on all sides with Kevlar® thread that has been double-locked stitched
- Large brass grommets added for extra durability and easy handling
- Temperature resistant: 1000°F (538°C)

**Applications:** Heavy-duty vertical curtain protection against sparks, molten metal splash, welding spatter and grinding spray. General purpose drop cloth for protection against welding spatter.

Model No.	Dimensions*
NT896	6 x 6
NT821	6 x 8



## SPIRAL TIP CLEANERS

- Cleaning data on back of case
- Hardened steel file included in each case
- Choice of Standard or extra long King set
- Quality aluminum case
- Includes 12 cleaners



Model No.	Description
NT222	Standard Set
NT221	King Set

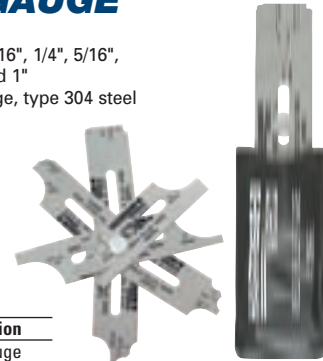


## WELD FILLET GAUGE

- Precision gauge
- Covers eleven sizes from 1/8", 3/16", 1/4", 5/16", 3/8", 7/16", 1/2", 5/8", 3/4", 7/8" and 1"
- Constructed of rust proof 22 gauge, type 304 steel
- Die blanked to eliminate sharp edges - adds to accuracy
- Permanently etched and black filled lettering for long life and abrasion resistance



Model No.	Mfg. No.	Description
704-5015	MWFG	Fillet Gauge



## COMBOFRAME ADJUSTABLE MODULAR WELDING SCREENS

### FRAMES

- Innovative COMBOframe combines high durability with extreme versatility
- Assembles in less than 5 minutes, no tools required
- Adjustable to fit both 6-foot and 8-foot-wide welding screens
- Made with heavy-duty finished steel tubing and connects with spring-pins
- Includes 360° swivel connectors that allow various configurations

### LAVASHIELD™ CURTAIN

- Specially formulated 16 mil thick vinyl
- Grommets every 12" interval
- Screen edges are hemmed with DuPont® Kevlar® stitching
- Resists to UV rays, flame and abrasion
- Sold per panel



Green Olive Drab



Yellow Orange



Model No.	Dimensions	UV Transparency	UV Resistance	Colour	Curtain Only
NT888	6 x 6	High	Moderate	Yellow	NT826
NT889	8 x 6	High	Moderate	Yellow	NT827
NT890	6 x 6	High	Moderate	Orange	NT828
NT891	8 x 6	High	Moderate	Orange	NT829
NT892	6 x 6	Moderate	Moderate	Green	NT830
NT893	8 x 6	Moderate	Moderate	Green	NT831
NT894	6 x 6	Opaque	Maximum	Olive Drab	NT832
NT895	8 x 6	Opaque	Maximum	Olive Drab	NT833

### FRAME ONLY

Model No.	Description
NT834	Modular Frame, Adjustable width 6' or 8'

# WELDING HELMETS

## P250 SERIES WELDING HELMETS

- A new generation of welding helmets!
- Lightweight, balanced flame resistant nylon helmet shell
- Telescopic, fully adjustable headgear
- Front loading filter and cover plate
- Choice of passive shade 10 lens, single shade, or variable-shade auto-darkening filters
- **Single shade:** 3-light, 10-dark, with 1.93" x 3.86" viewing area and 2 sensors
- **Variable shade:** 3-light, variable 9-13 - dark, with 1.93" x 3.86" viewing area
- "Light Guide" sensory technology on the variable shade model virtually eliminates sensor block
- Solar powered with replaceable batteries
- ANSI Z87, CSA Z94
- 2 year warranty on ADF



TTU054



TTU055



TTU053



Model No.	Mfg. No.	Shade	Colour
TTU053	K2500	Passive Shade 10	Metallic Black
TTU054	K2501	Single Shade	Metallic Red
TTU055	K2502	Variable Shade	Metallic Red

## FMX™ WELDING HELMETS

- Professional, full-wrap, heat and scratch-resistant graphics
- Superior ADF lens
- ADF shade control: 9-13
- Viewing area: 7 sq.in.
- Solar powered
- Proven "3-C" headgear for all day comfort
- Lightest-weight, full-size helmet available
- Meets ANSI and CSA standards
- 2-year warranty on ADF
- Limited lifetime warranty on helmet shell and headgear

SAQ809



SAQ811



SAQ810

Model No.	Mfg. No.	Description
SAQ809	2999BV913X1	"Flame" graphics
SAQ810	2999BV913X2	"Demon" graphics
SAQ811	2999BV913X3	"Wire Burner" graphics

## SPERIAN SATELLITE™ OSE HELMET

- Widest field of vision of any helmet
- ADF technology is combined with easily accessible external controls to eliminate the need for helmet removal
- Shell profile channels fumes away, extended coverage protects chest, neck and ears
- Variable shade selection of 5 through 13 with infinite potentiometer adjustment
- Grinding mode setting
- Sensitivity control to match application
- Delay switch to control dark to light switch time
- Power supply: Solar cells
- 2-year warranty on ADF cartridge



Model No.	Mfg. No.	Colour
SAJ752	K600	Charcoal
SAJ753	K601	Blue
SAJ754	K602	Silver



## SPERIAN OSC™ HELMET

- External shade level adjustment from 9-13 with infinite potentiometer adjustment
- Delay switch to adjust switching speed
- Sensor bar eliminates peripheral light interference
- 2-year warranty on cartridge



Model No.	Mfg. No.	Colour
SAJ755	K550	Black

## HELMET PADS & SWEATBANDS

- Field-tested to improve helmet grip with maximum perspiration absorption
- Helmet pads are flame retardant for added safety
- Made of an absorbent air-cushioned layer lined with 10% fleece cotton
- Velcro fastening system is designed to fit all major brands of headgear
- Sweatbands come with elastic strap
- Sold per package of 2



Non-suspender headgear



Suspender headgear



Sweatbands

Model No.	Description
620-3100V	Non-Suspender Pads For Use With Welding Helmets
620-3200V	Suspender Pads For Use With Hard Hats
SAM548	Sweatbands

## WELDING HELMETS

- Lightweight design with ratchet headgear
- Comes complete with shade 10 lens
- Choice of 2" x 4 1/4" flip front or 4 1/2" x 5" wide vision fixed front



SAJ528



SAJ527

Model No.	Size"	Description
SAJ527	2 x 4 1/4	Flip Front
SAJ528	4 1/2 x 5 1/4	Fixed Front

# GOGGLES & CLOTHING

## FLEXIBLE FRAME GOGGLES

- Soft PVC frame seals out light leaks
- Choice of 2" x 4 1/4" fixed front or flip front design
- Comes complete with shade 5 lens

NT646



NT647



Model No.	Description
NT646	Fixed Front
NT647	Flip Front



## LAVA BROWN LEATHER ACCESSORIES

- Designed to allow even weight distribution on the user to reduce fatigue
- Heat and flame resistant leather is made from durable side split cowhide



Model No.	Size
-----------	------

### A. SLEEVE

644-7023	23" L
----------	-------

### B. CAPE SLEEVES

644-7800S	Small
644-7800M	Medium
644-7800L	Large
644-7800XL	X-Large
644-7800XXL	2X-Large
644-7800XXX	3X-Large

### C. BIBS

644-7814	14" L
644-7820	20" L

### D. SPLIT LEG APRONS & CHAPS

644-7242	42" L
644-7248	48" L
644-7440	Chaps

### E. BIB APRONS

644-7124	24" L
644-7136	36" L
644-7142	42" L
644-7148	48" L

### F. SPATS

644-7106	6" L
644-7114	14" L



## CUP GOGGLES

- Rigid 2" (50 mm) round lens cup goggle
- Comes complete with shade 5 lens



Model No.	Description
NT648	Cup Goggles

## FLAME RETARDANT CLOTHING

- Manufactured from flame retardant treated cotton sateen
- Will retain its flame retardant properties for up to 50 normal washings
- Specially-designed underarm sport cut and hemmed collar
- 9-oz. jackets include inside pocket and five snaps
- 9-oz. cape sleeves come with six-snap fasteners for bib (sold separately)



Model No.	Size	Chest Measurements
-----------	------	--------------------

### JACKETS

630-6130M	Medium	40-42"
630-6130L	Large	44-46"
630-6130XL	X-Large	48-50"
630-6130XXL	2X-Large	52-54"
630-6130XXX	3X-Large	56-58"

### CAPE SLEEVES

630-6228M	Medium	40-42"
630-6228L	Large	44-46"
630-6228XL	X-Large	48-50"
630-6228XXL	2X-Large	52-54"
630-6228XXXL	3X-Large	56-58"

### BIB & SLEEVES

630-6220	20" Length Bib	-
630-7318	18" Long Sleeve	-
630-7323	23" Long Sleeve	-



## LAVA BROWN LEATHER JACKETS

- Designed to allow complete body movement and freedom
- Heat and flame resistant leather is made from durable side split cowhide
- Seams are double lock stitched
- Include full-sized pocket and multiple-snap adjustment cuffs
- Roll-up collar stops shooting spatter



Model No.	Size	Chest Measurements
644-7300M	Medium	40-42"
644-7300L	Large	44-46"
644-7300XL	X-Large	48-50"
644-7300XXL	2X-Large	52-54"
644-7300XXXL	3X-Large	56-58"



# WELDERS GLOVES

## WELDERS' STANDARD QUALITY GLOVES

- Rugged split cowhide leather construction
- Excellent abrasion resistance
- Full thermal cotton lining provides added heat protection
- Weltd seams at all critical points
- Case qty: 60
- Sold per pair



Model No.	Description	Size
SA0130	Glove	Large
SA0131	One-Finger Mitt	Large



## WELDERS' SUPERIOR QUALITY GLOVES

- Top split cowhide leather construction
- Excellent abrasion resistance
- Double thumb patch extends wear life
- Full thermal cotton lining provides added heat protection
- Weltd seams at all critical points
- Case qty: 60
- Sold per pair



Model No.	Description	Size
SA0128	Glove	Large
SA0129	One-Finger Mitt	Large



## WELDERS' PREMIUM QUALITY GLOVES

- Premium split cowhide leather construction
- Excellent abrasion resistance
- Double thumb patch extends wear life
- Full thermal cotton lining provides added heat protection
- Weltd seams at all critical points
- Sewn with Kevlar® thread to avoid burning
- Case Qty: 60
- Sold per pair



Model No. SAN635



## WELDERS' PREMIUM QUALITY FOAM LINED GLOVES

- Premium split cowhide leather construction
- Excellent abrasion resistance
- Double thumb patch extends wear life
- Cotton covered foam lining provides superior heat protection
- Weltd seams at all critical points
- Sewn with Kevlar® thread to avoid burning
- Case qty: 60
- Sold per pair



Model No. SAN277



## WELDERS' DEERSKIN TIG GLOVES

- Premium split deerskin leather construction
- Designed for precision welding applications
- Superior fit and dexterity
- Double thumb strap extends wear life
- 4" gauntlet cuff provides superior protection
- Exceptionally soft
- Case qty: 120
- Sold per pair



Model No.	Size
SM597	Small
SM598	Medium
SM599	Large
SM600	X-Large
SAP293	2X-Large

## WELDERS' PIGSKIN TIG GLOVES

- Premium grain pigskin leather construction
- Designed for precision welding applications
- Excellent fit and dexterity
- Exceptional durability
- Double thumb strap extends wear life
- 4" gauntlet cuff provides superior protection
- Case qty: 120
- Sold per pair



Model No.	Size
SAN639	Small
SAN640	Medium
SAN641	Large
SAN642	X-Large

## ALUMINIZED WELD-O-GLASS BACK HAND PAD

- Protects the back of your hand and glove from spatter and high radiant heat
- Increases life of gloves
- Allows you to weld longer at higher temperatures
- Double layer protection
- Sewn and riveted for added durability
- Case qty: 144
- Sold individually



Model No. 146-1610

MFG. No. BHP06

**Wilson**

## HIGH HEAT HAND SHIELD

- Aluminumized PFR rayon reflects 95% radiant heat
- 5-ply DuPont® Kevlar® sewn and split cowhide backing for extra durability
- Leather and elastic strap system
- Glove sold separately
- Case qty: 144
- Sold individually



Model No. SE549

